

RESCUE UNION SCHOOL DISTRICT

AGENDA ITEM: Information Regarding Elementary Music Program Delivery Model

BACKGROUND:

Mila Olson has been providing instrumental music instruction to our 4th and 5th grade students for the past three years. She has greatly increased the number of students participating due to her expertise and rapport with students. This current school year in particular, teachers are increasingly concerned with the amount of time students are pulled from core academic time to be in band. We are looking at other options for future years that alleviate some of this issue. We invited all district music teachers (Ben Cain, Shaun Manley, and Mila Olson) to the October board meeting to discuss a possible alternative program idea for next school year that would give more students access to music, as well as decrease the amount of time students are taken from their core academic lessons each week. The three music teachers proposed a schedule in which 5th grade students would continue to receive pull out instruction on band instruments, but all fourth grade classes would receive push in music instruction. At the October meeting, the Board directed the administration to survey the parents and 4th grade teachers to get stakeholder feedback relative to the new idea that was proposed.

STATUS

All fourth grade teachers and parents were sent a survey to provide feedback regarding the music proposal submitted by the RUSD music teachers. Eight fourth grade teachers and 253 parents responded to the survey. The results of the survey will be shared with the board.

FISCAL IMPACT:

N/A


BOARD GOAL:

Board Focus Goal I – STUDENT NEEDS:

- B. Curriculum and Instruction: Provide a meaningful, innovative learning environment using Common Core, and other student content standards and researched-based, progressive, effective instructional methodology, instructional materials, staff development and technology that will ensure student success in career and college.

RECOMMENDATION:

The Board receive information regarding the elementary music survey results and the preferred option for elementary music instruction for the 2020-2021 school year.

A close-up photograph of a person wearing a black and white mask with a wide-open mouth, set against a dark background with a red light source. The mask has a white face with black markings around the eyes and mouth. The person's mouth is open in a scream or shout, showing their teeth and tongue. The background is dark with a prominent red light source on the left side, creating a dramatic and intense atmosphere.

**RUSD
Elementary
Music
Survey**

Potential Shift in Elementary Music Delivery

Move from offering “pull out” instruction on band instruments (trumpets, clarinets, flutes, and drums) in 4th and 5th grade

to

Offering “pull out” band instrument instruction for 5th grade only

and

“Push in” music instruction for ALL 4th grade students.

Potential Pros

- Limits the number of students coming and going during the 160 minute band period.
- All fourth grade students would have a 30 minute music class.
- Music foundations taught to all would hopefully lead to more involvement in 5th grade.
- Many 4th grade students are not physically developed enough to play certain instruments (i.e. flute) with ease.

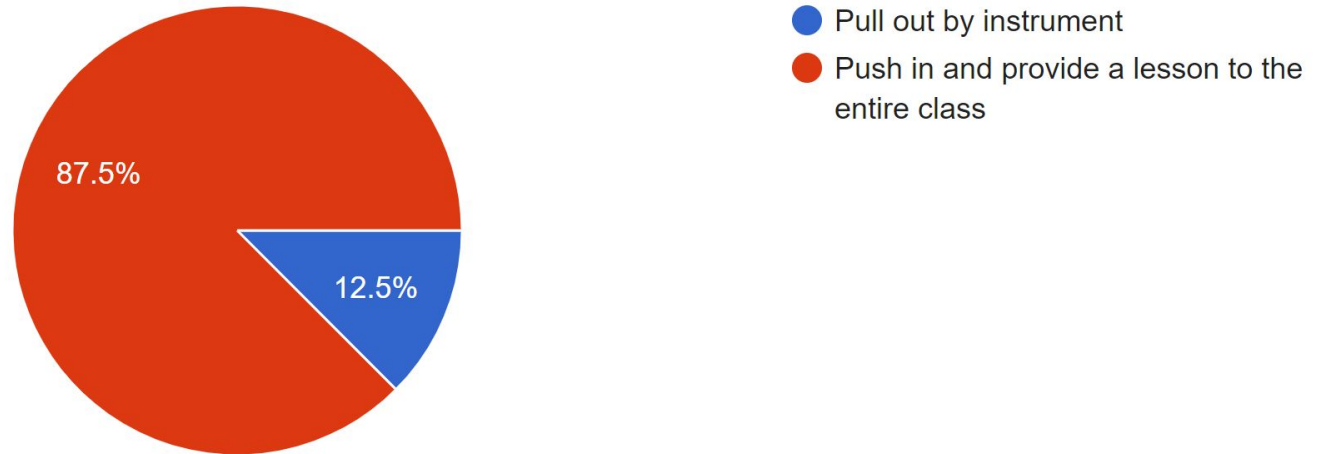
Potential Drawback

- Fourth grade students would not be offered band instruments until fifth grade.

Survey Results (4th Grade Teachers)

When you think about elementary music instruction, would you prefer that we continue to pull fourth grade students by instrument, or would you prefer to have Mila push in and provide a 30 minute lesson with no pull out?

8 responses



Survey Results (4th Grade Teachers)

Sample Open Ended Comments:

“I would prefer that the whole class be exposed to music at one time, vs the chaos that can occur with students coming and going and trying to catch up on work.”

“It is very disruptive to have students constantly leaving and missing core subjects...”

“I like the idea of all students getting music instruction! I think having a consistent schedule would be helpful so teachers could plan accordingly.”

“Sometimes band kids get mad if you do something that they don't want to miss.”

“I wish music instruction was for all grade levels, because music is very soothing, and music is wonderful for students to use different modalities of learning.”

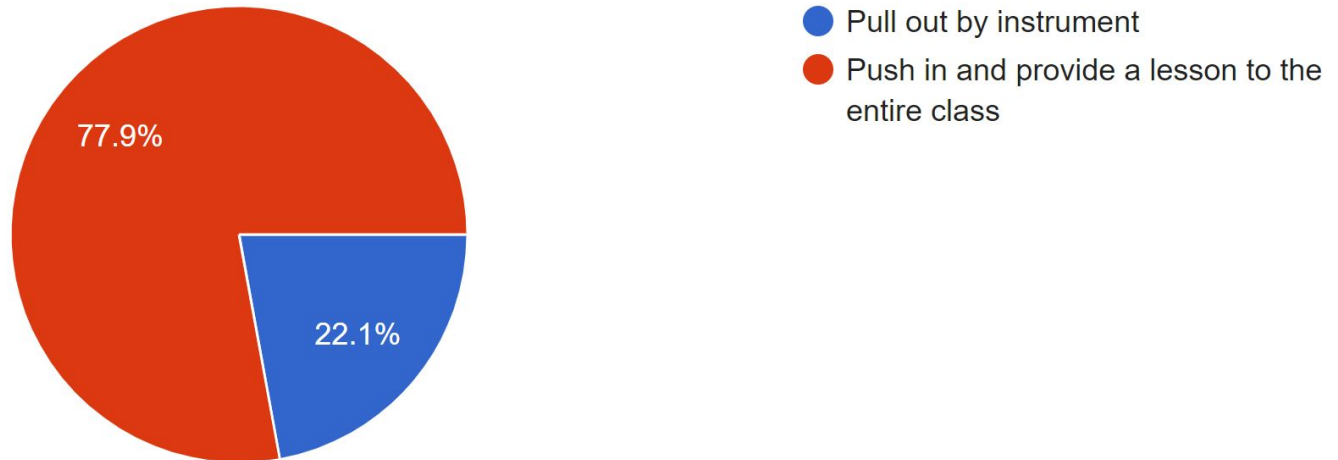
“I can't afford to lose another block of instruction weekly when we already have things like art, dance, and assemblies.”

“I would love to have both!”

Survey Results (Parents)

When you think about elementary music instruction, would you prefer that we continue to pull fourth grade students by instrument or would you prefer to have the music teacher push in and provide a 30 minute lessons to all students?

253 responses



Survey Results (Parents)

Sample of Open Ended Comments:

“We love the idea that every 4th grader gets music with Mrs Olson.”

“Continue push in for 5th grade as well”

“If lessons had been offered after school that would have been better.”

“Having several students that are pulled out in groups of 4-5, several different times a day is very disruptive to the class.”

“Providing music to the entire 4th grade is so much better than just the kids who choose band!”

““I feel that music is an important part of arts and should be made available to everyone.”

“I like the idea of offering music instruction to all students. It’s a big commitment to make to an individual instrument before you’ve ever had any exposure to music instruction.”

“My son did band last year but chose not to do it this year because he hated missing class.”

Survey Results (Parents)

"This is a great idea and solves the problem for 4th grade but what about 5th? They are still missing out on class time instruction. I think band should be an early start day just like choir."

"I LOVE this idea! My son really wanted to play an instrument, but was dissuaded from doing so by his teacher because of being pulled out."

"Music is something he loves and has so many known benefits. Hooray for this!"

"My son doesn't seem to be having a problem with the current method. So I'm fine with keeping it. But I'm also OK with trying a different method out as well. We are very flexible!"

"My daughter loves school, but is on the low side academically. She is a very talented dancer and thrives in choir and band. I questioned whether to let her join band because she really can't afford to miss class time. I am so glad this is being addressed and I would love an option that allows her to participate in music without having to worry about missing class instruction time."

"I appreciate the advice of the Music Teachers and love the idea of my children receiving exposure to music as part of their 4th grade curriculum and then honing skills on an instrument in 5th grade."

"Include third grade."

"Music in the classroom is awesome. Even "just" a teacher playing guitar and teaching songs to the kids to sing together is so memorable. That's what I remember about my elementary school experience!"

Recommendation

Given that the majority of fourth grade teachers and district parents support the idea of moving to a “push in” model for fourth grade, and the fact that all of our district music teachers agree that this model will better serve students, it is the recommendation of the District that we move to the push in model beginning in the 2020-2021 school year.

Furthermore, it is the recommendation of the District that notification to parents, students, and staff begin no later than March of this school year (2019-2020).

RESCUE UNION SCHOOL DISTRICT

AGENDA ITEM: Elementary and Middle School Stipends

BACKGROUND:

Currently there is a wide variety of possible stipends available for elementary and middle schools. Each site has different stipend offerings depending on individual need and interest. Schools have the ability to select which activities/clubs/sports/events, that have attached stipends, ultimately addressing specific site needs.

STATUS:

The Board requested an opportunity to look at the district list of possible stipends. The Board has requested time to discuss the current stipend list and process for selecting stipends at each school.

FISCAL IMPACT:

N/A

BOARD GOALS:

Board Focus Goal I – STUDENT NEEDS

- A. Student Safety and Well Being: Enhance and encourage social, emotional, ethical and civic learning by providing a safe, supportive and diverse environment
- B. Curriculum and Instruction: Provide a meaningful, innovative learning environment using Common Core, and other student content standards and research-based, progressive, effective instructional methodology, instructional materials, staff development and technology that will ensure student success in career and college.

Board Focus Goal VI – CULTURE OF EXCELLENCE

Create and promote practices that support, reward and incentivize employees to perform at exceptional levels for the benefit of our students.

RECOMMENDATION:

The Board review and discuss the current list of stipends offered through the RUFT contract.

Rescue Union School District

Stipends

Middle School

All amounts are annual unless noted otherwise

After School Intervention Coordinator	\$ 500
ASB Bookkeeper	\$ 850
Athletic Director	\$1,850
CJSF/Honor Society Advisor	\$ 400
Climate Committee	\$1,500
Club Advisor	\$ 240
Coach-Basketball	\$1,200 per Team
Coach-Cross Country	\$1,500 x2 (3 boys' & 3 girls' teams)
Coach-Track	\$1,500 x2 (3 boys' & 3 girls' teams)
Coach-Volleyball	\$1,200 per Team
Coach-Wrestling	\$1,200 per Team
Garden Coordinator	\$4,000
GLOBE Coordinator	\$ 650
Intramural Coordinator	\$1,400
Music Director	\$2,040
PC Pals Coordinator	\$ 400
Safety Patrol Advisor	\$ 240
SIP Coordinator (By Board Policy)-Level 1	\$ 600
SIP Coordinator (By Board Policy)-Level 2	\$1,200
SSF Coordinator	\$1,800
Student Council Advisor	\$1,600
Teacher-in-Charge	\$ 300 1 per Middle School
Test Coordinator	\$ 240
WEB Advisor	\$1,500
Yearbook Coordinator	\$1,200

Elementary School

Coach-All Sports	\$ 550 per Team
ELPAC Testing	\$ 225 per Tester
Garden Coordinator	\$4,000
Health & Fitness Coordinator	\$ 550
Literacy Intervention Coordinator	\$ 450
Music Coordinator at the Elementary	\$ 350 per Trimester
Outdoor Education	\$ 75 per Night
PC Pals Coordinator	\$ 400
Safety Patrol Advisor	\$ 225
SIP Coordinator (By Board Policy)-Level 1	\$ 600
SIP Coordinator (By Board Policy)-Level 2	\$1,200
SST Coordinator	\$1,800
Student Council	\$ 450
Teacher-in-Charge	\$ 250 (Two per Elem School)
Test Coordinator	\$ 225
Yearbook Coordinator	\$ 550

Others

PAR Consulting Teacher 1	\$2,600
PAR Consulting Teacher 2	\$2,000
PAR Panel	\$ 500
PAR Panel Facilitator	\$ 750
Peer Educator Advisor	\$ 500
Teacher Induction Program (TIP Support Provider)	\$2,600

RESCUE UNION SCHOOL DISTRICT

AGENDA ITEM: **School Attendance Boundary:** **Serrano Development Dual Attendance Boundary**

BACKGROUND:

Rescue Union School District Board Policy BP 5116 – School Attendance Boundaries states the following regarding school attendance boundaries:

The Governing Board shall establish school attendance boundaries in order to maximize the efficient use of district facilities and effective administration of district schools. The Superintendent or designee shall periodically review school attendance boundaries and, as necessary, make recommendations to the Board for boundary adjustments.

The District staff and Board has reviewed demographic projections for enrollment and have recognized an imbalance between some of our elementary and middle school sites.

The Board has requested in the past to look at boundaries that currently would have minimal impact on student movement, but would help with future enrollment imbalance in the district.

STATUS:

Community members moving into the new development of Serrano HOA (Sienna Ridge) have been requesting attendance at the campus closest to their new homes (Green Valley/Pleasant Grove) and additionally have requested transportation services.

Due to the changing needs for transportation services in the Bass Lake Road area, District staff were already planning to add an additional bus route for the 2020-21 school year and therefore can accommodate offering transportation to the existing (LV/MV) and new school (GV/PG) sites for this dual attendance boundary area.

It should be noted that the District will continue to allow those properties in the Serrano HOA to attend Lakeview/Marina Village campuses, and also have the ability to attend Green Valley/Pleasant Grove if they so choose.

In utilizing the criteria in BP 5116 – School Attendance Boundaries, it has been noted that Green Valley Elementary and Pleasant Grove Middle School are the nearest in proximity to these parcels, have experienced declines in enrollment, are less impacted by enrollment than other schools, and would provide a continuity of K-8 educational programs for students within the boundary area.

FISCAL IMPACT:

Information Item – No Financial Impact

BOARD GOAL:

Board Focus Goal II – FISCAL ACCOUNTABILITY:

Keep the district fiscally solvent through prudent LCAP aligned budget processes in order to meet the needs of our students.

Board Focus Goal V – FACILITY/HOUSING:

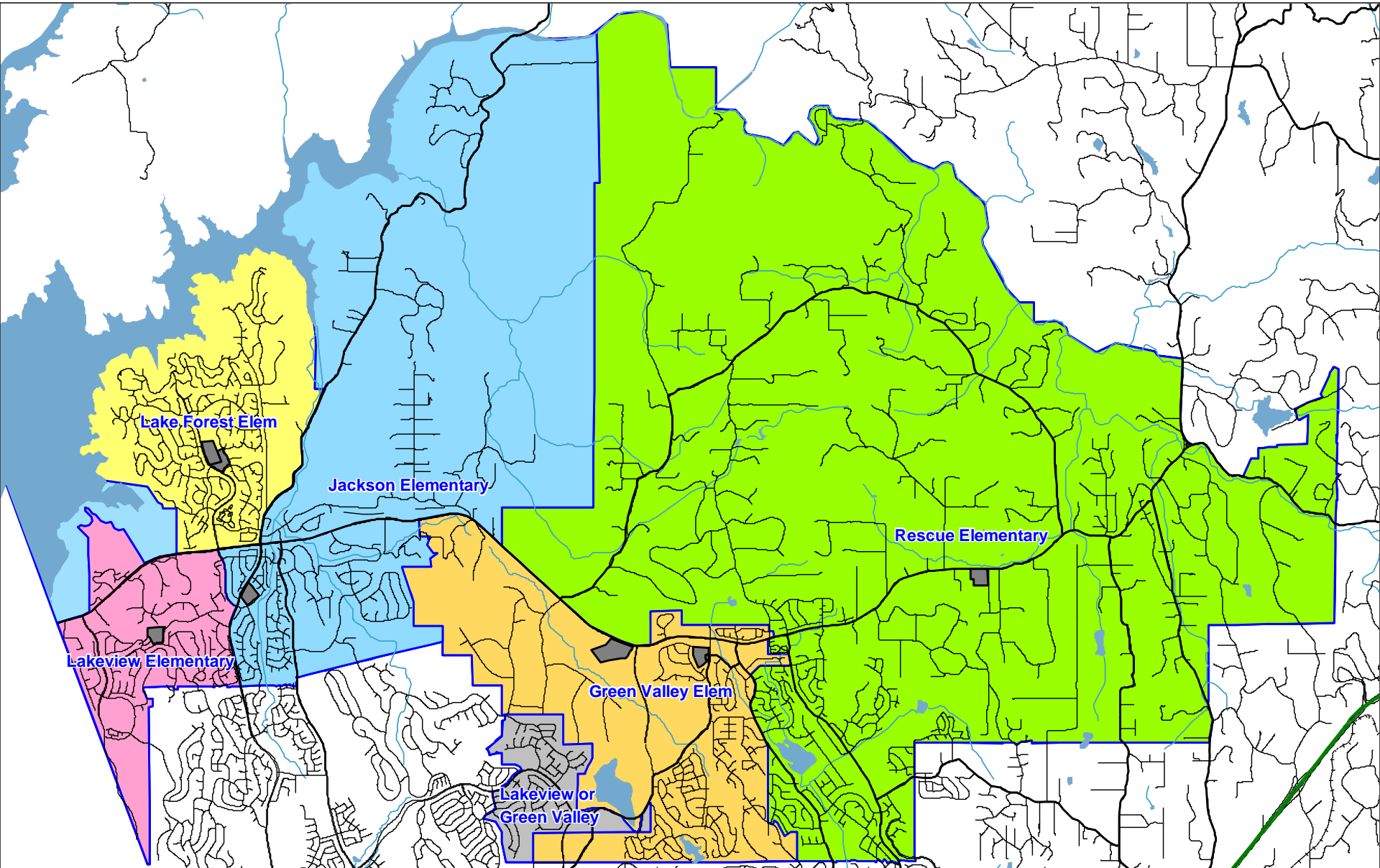
Build, improve and maintain school facilities to meet current and future education needs while integrating the most effective and efficient use of resources.

RECOMMENDATION:

The District staff recommends the Board approve the revised school attendance boundary map with the adjustment to create a dual attendance boundary for the Serrano Homeowners to attend either Green Valley Elementary or Lakeview Elementary and Pleasant Grove Middle or Marina Village Middle Schools.

Rescue School District

Boundary Map - Elementary



Rescue School District

Boundary Map - Middle

